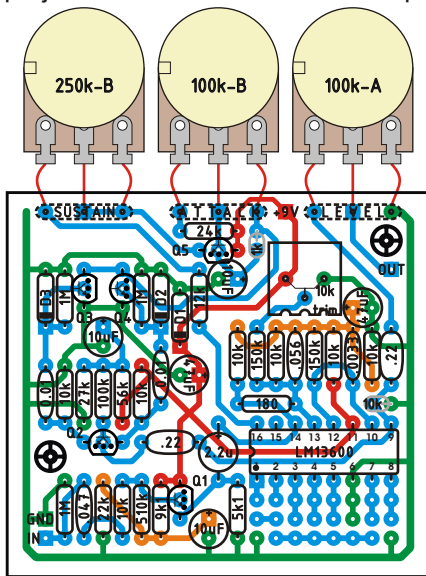
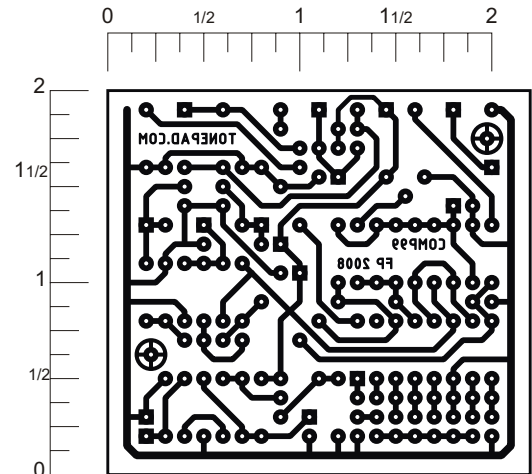


Build the ibanez cp9 on this layout. It's an adaptation like many others of the popular ross/dynacomp circuit, but instead of using the obsolete CA3080 it uses an LM13600, which is a dual OTA still in production. Extra pads for experimentation and mods are provided in the lower right corner of the layout, these pads are connected to the unused half of the LM13600, and if not required can be ignored. Offboard wiring except for the potentiometers are not shown on the layout, view offboard wiring project for ideas on how to connect power and bypass. Visit www.tonepad.com for more!



LAYOUT



READY TO TRANSFER

Parts List

Resistors

1 - 180
1 - 1k
1 - 5.1k (5k1)
1 - 9.1k (9k1)
8 - 10k
1 - 12k
1 - 22k
1 - 24k
1 - 27k
1 - 56k
1 - 100k
2 - 150k
1 - 510k
3 - 1M

Capacitors

1 - 0.0033 μ F
2 - 0.01 μ F
1 - 0.047 μ F
1 - 0.056 μ F
2 - 0.22 μ F
1 - 2.2 μ F
3 - 10 μ F
2 - 47 μ F

Transistors & ICs

5 - 2N5088
IC1 - LM13600

Diodes

3 - 1N914

Pots

1 - 100k log. (100kA)
1 - 100k lin. (100kB)
1 - 250k lin. (250kB)
1 - 10k lin. trim

Schematic

