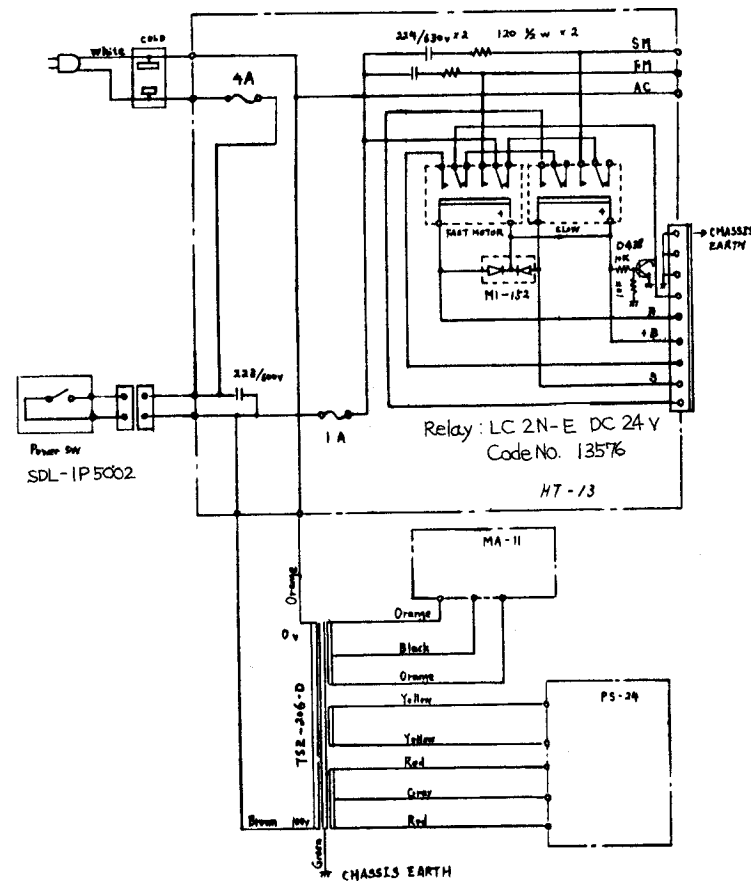
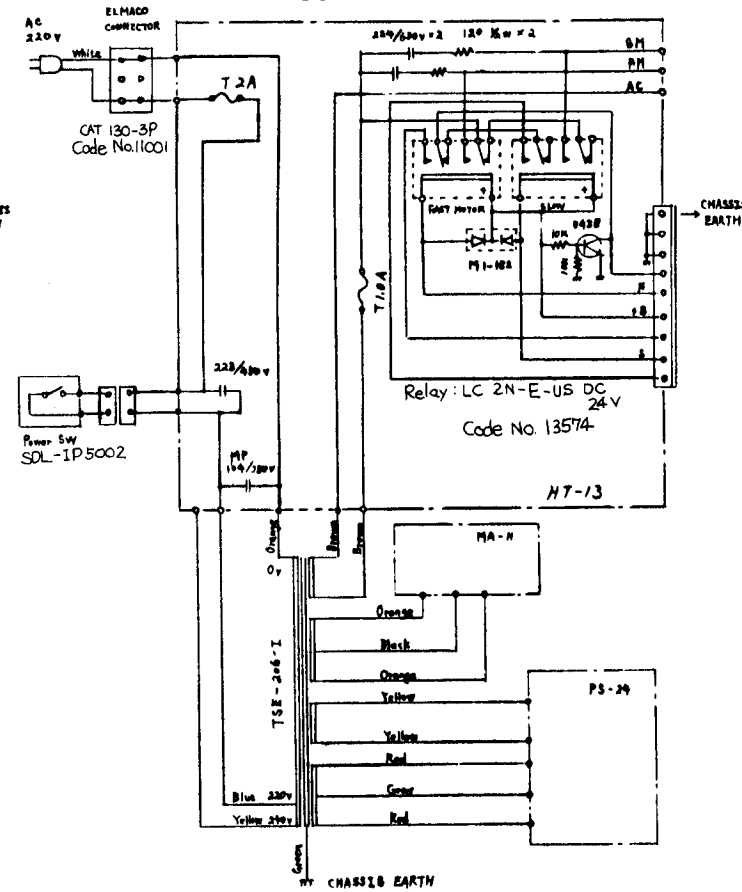


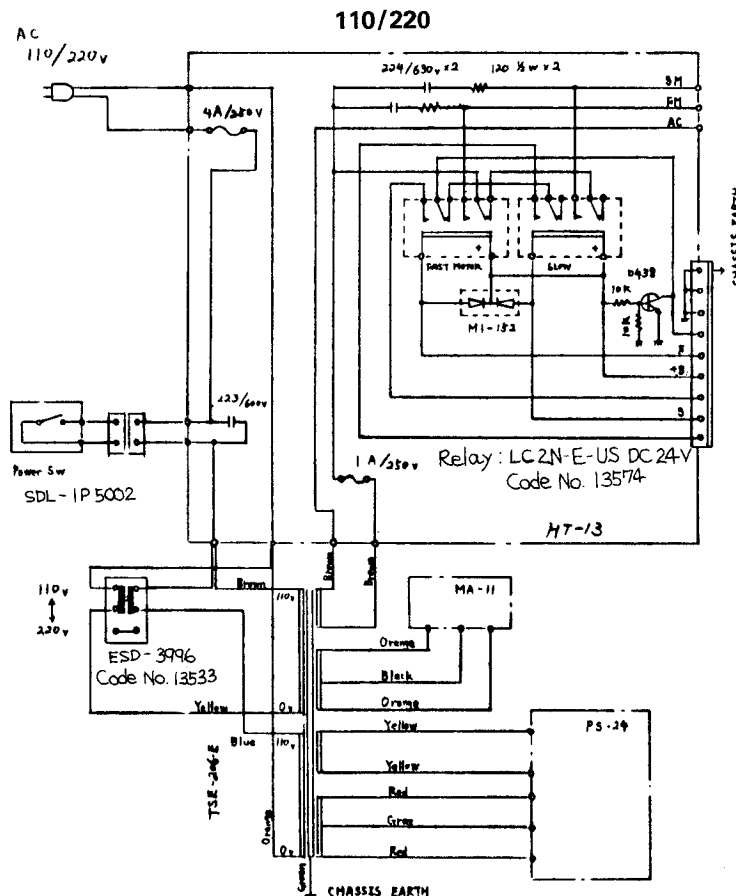
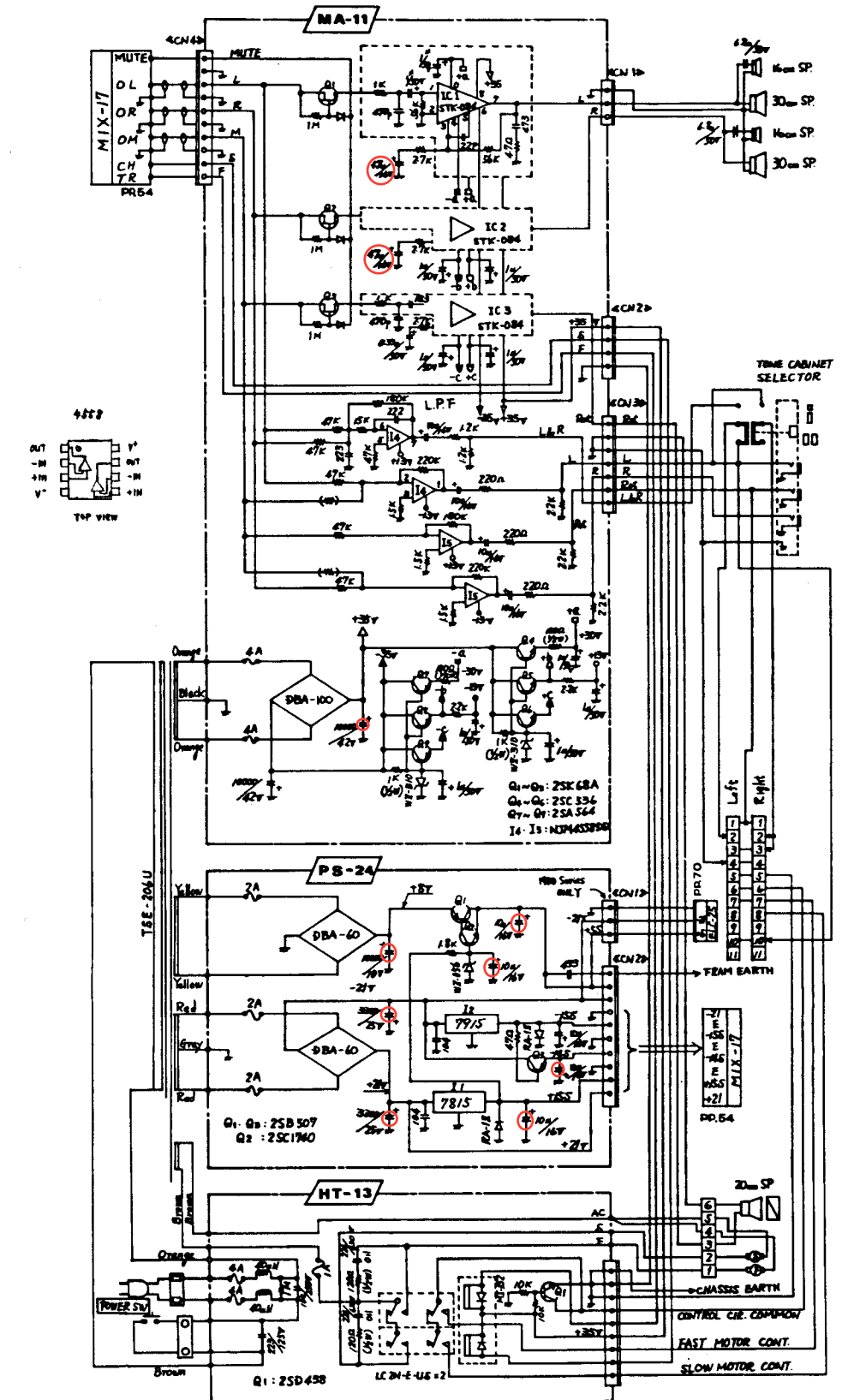
JAPAN



EUROPE U. K. SOUTH AFRICA

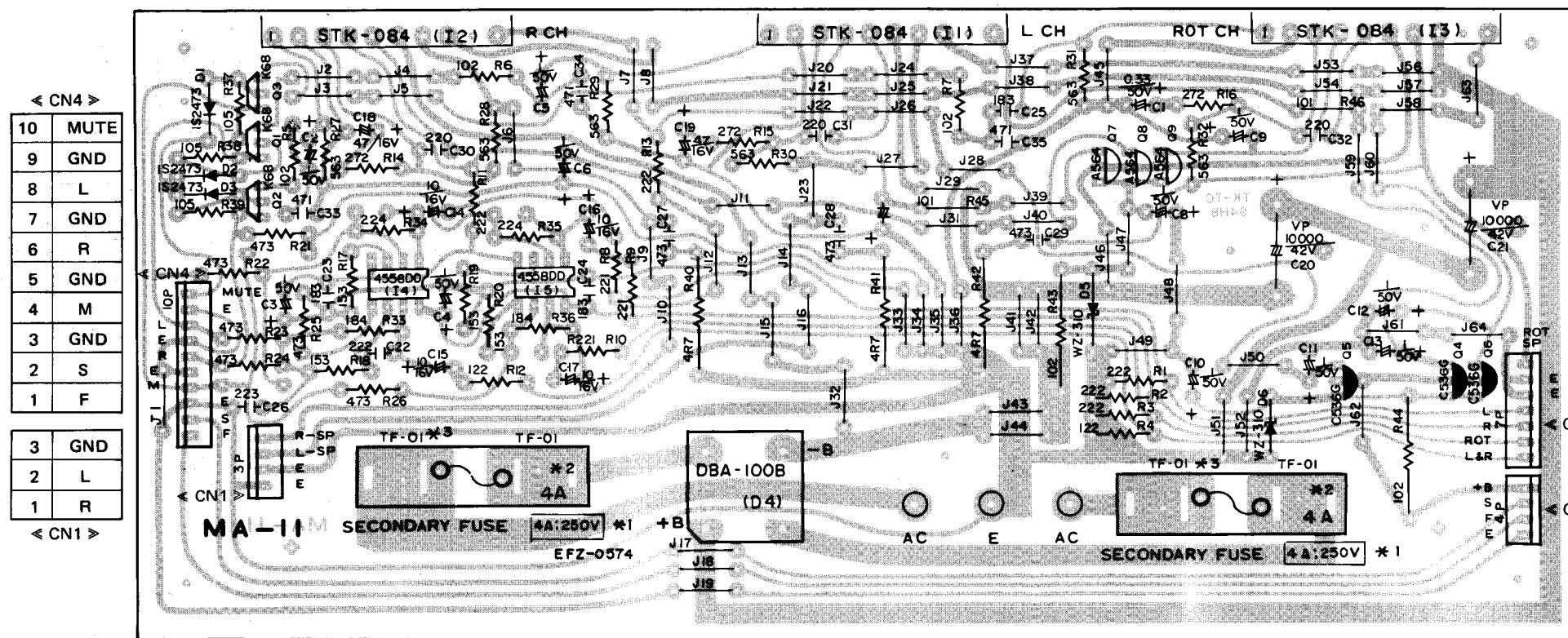


32. MAIN AMP. & POWER SUPPLY MA-11, PS-24 HT-13 (USA & CANADA)



« MA-11 »

R8, R9, R10: 820Ω → 220Ω	'82.7	Speaker Channels Level Balance
R36: 220KΩ → 180KΩ	S/No. 370957~	(Ref. O.S.B.-0032)



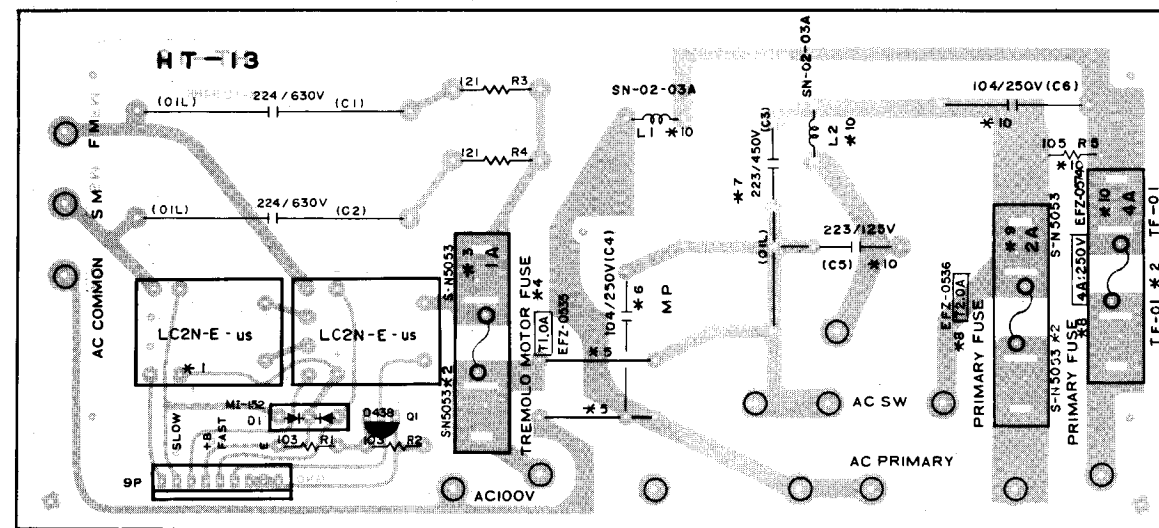
[Note]

Item	*1	*2	*3
Market	Seal	Fuse	Fuse Holder
CEE-SAA BS-W	T4.0A EFZ-0575	4A (5mmx20mm)	S-N5053
JAPAN	Not Use	4A (6mmx31mm)	TF-01
Others	4A: 250V EFZ-0574	4A (6mmx31mm)	TF-01

« MA-11 »

S : Slow
F : Fast
L & R : Left and Right for Leslie
Rot : Rotary

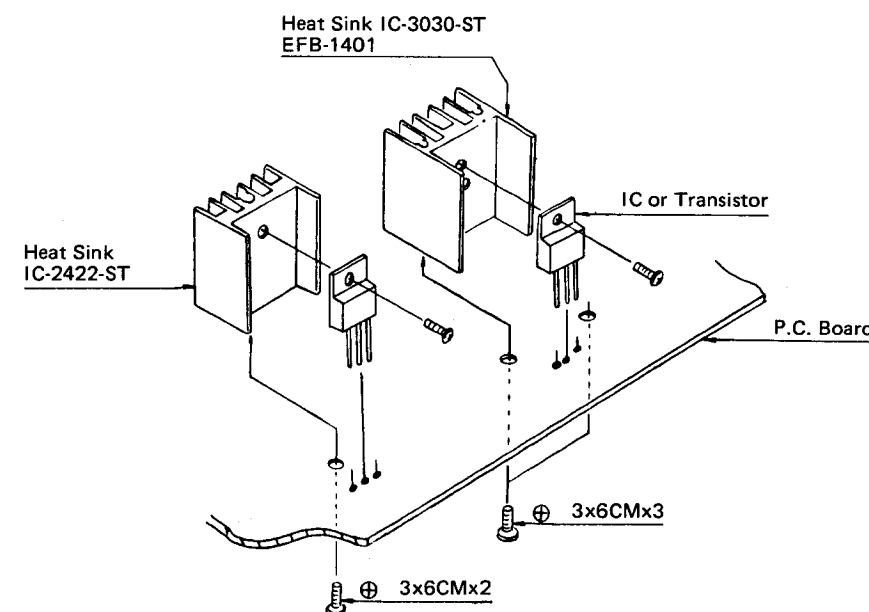
« CN1 »	« CN2 »
1 GND	1 Frame Earth
2 -21V	2 +5V
3 +5V	3 -21V
	4 GND
	5 -15V
	6 GND
	7 -14V
	8 GND
	9 +15V
	10 +21V



[Note]

Item	*1	*2	*3	*4	*5	*6	*7	*8	*9
Markets	Relay	Fuse Holder	Fuse	Seal	Jumper Line	Capacitor	Capacitor	Seal	Fuse
CEE-SAA BS-W		S-N5053	1A (5mmx20mm)	T1.0A EFZ-0535		○ (CEE ONLY)	223/450V (Oil)	T2.0A EFZ-0536	2A (5mmx20mm)
U. S. A.	LC2N-E-US			1A-250V EFZ-0201	Not Use		Not Use	4A: 250V EFZ-0574	
C. S. A.		TF-01	1A (6mmx31mm)	Not Use	○		223/125V	Not Use	4A (6mmx31mm)
JAPAN	LC2N-E			Not Use			223/600V	Not Use	
Others	LC2N-E-US			1A-250V EFZ-0201	Not Use			4A: 250V EFZ-0574	

*10: U.S.A. Market ONLY



[Note]

Item	*1	*2	*3
Market	Seal	Fuse	Fuse Holder
CEE-SAA BS-W	T20A EFZ-0536	2A (5mmx20mm)	S-N5053
JAPAN	Not Use	2A (6mmx31mm)	TF-01
Others	2A-250V EFZ-0199	2A (6mmx31mm)	TF-01

