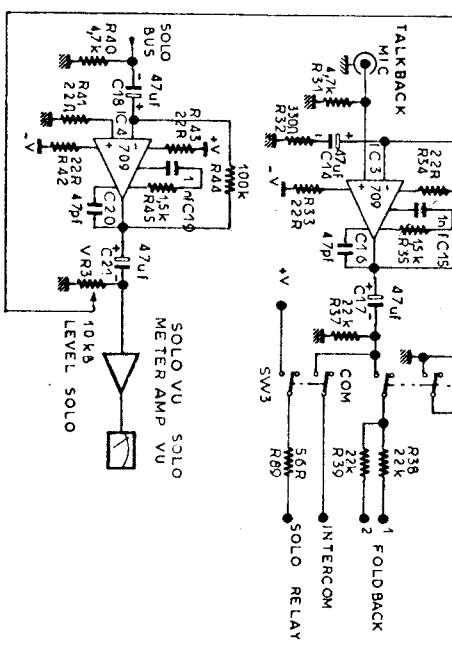
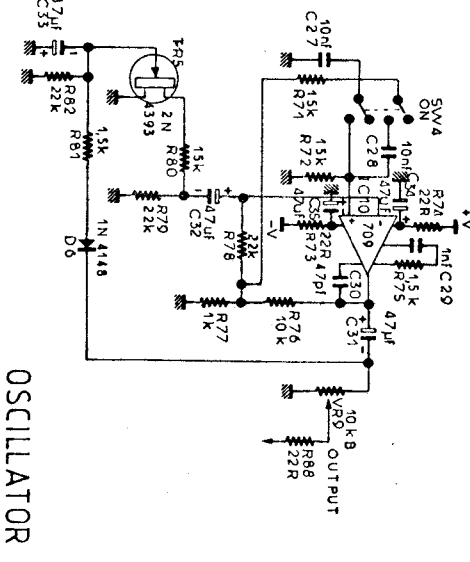
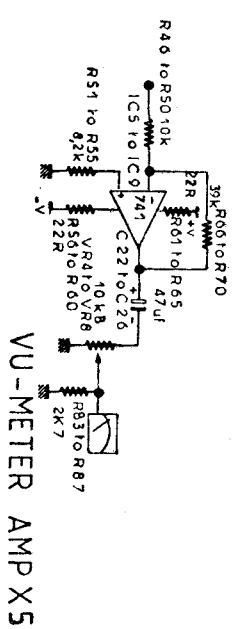
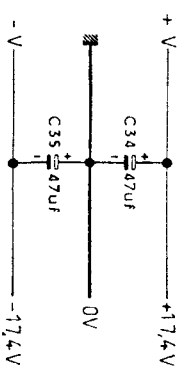


ALL RESISTOR 1/4W 5%  
CARBON  
ALL ELECTROLYTIC CAPACITOR  
25V UNLESS OTHERWISE STATED



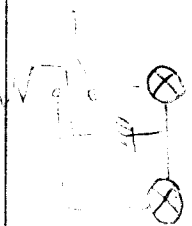
# MONITOR

# VU-METERS



REFERENCES	MAXI	MODIFICATIONS	DATE	DESIGNER	DATE
D 8	SW 4				
TR 5	C 35				
IC 70	REL 3				
R 80					
VR 0					

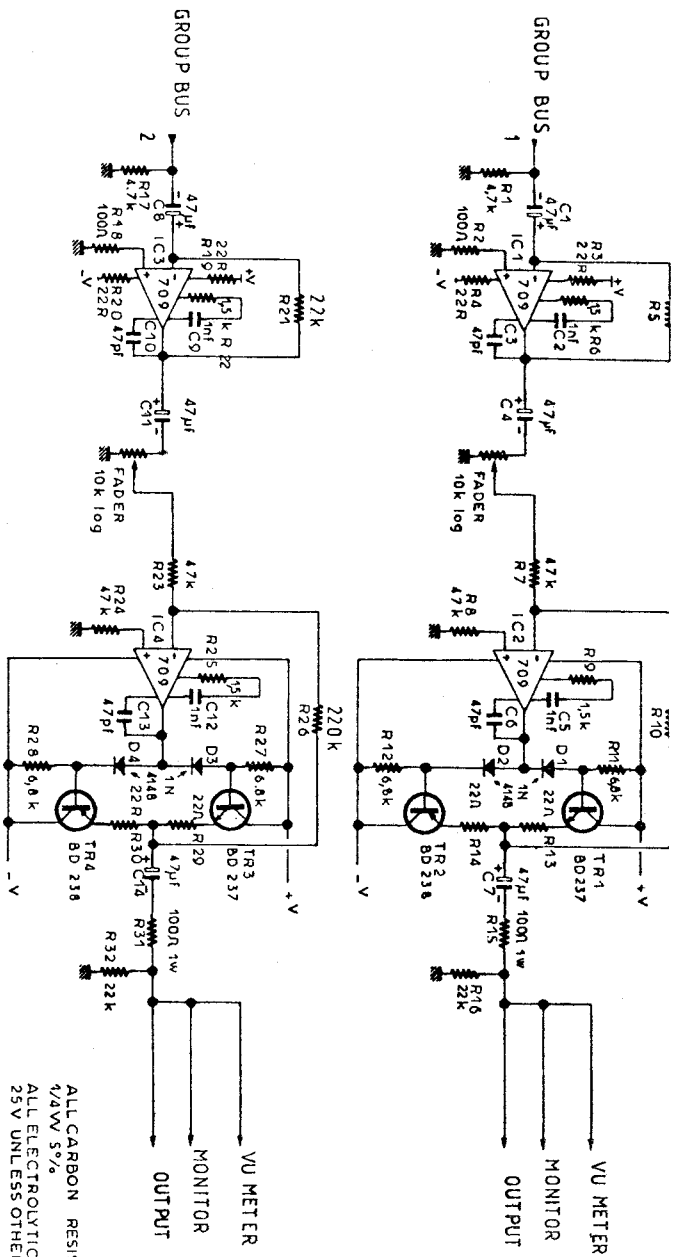




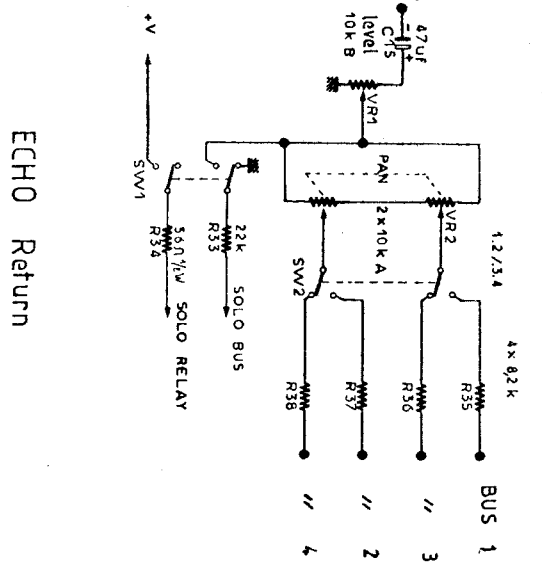
*Anderson*

INPUT MODULE	530
--------------	-----

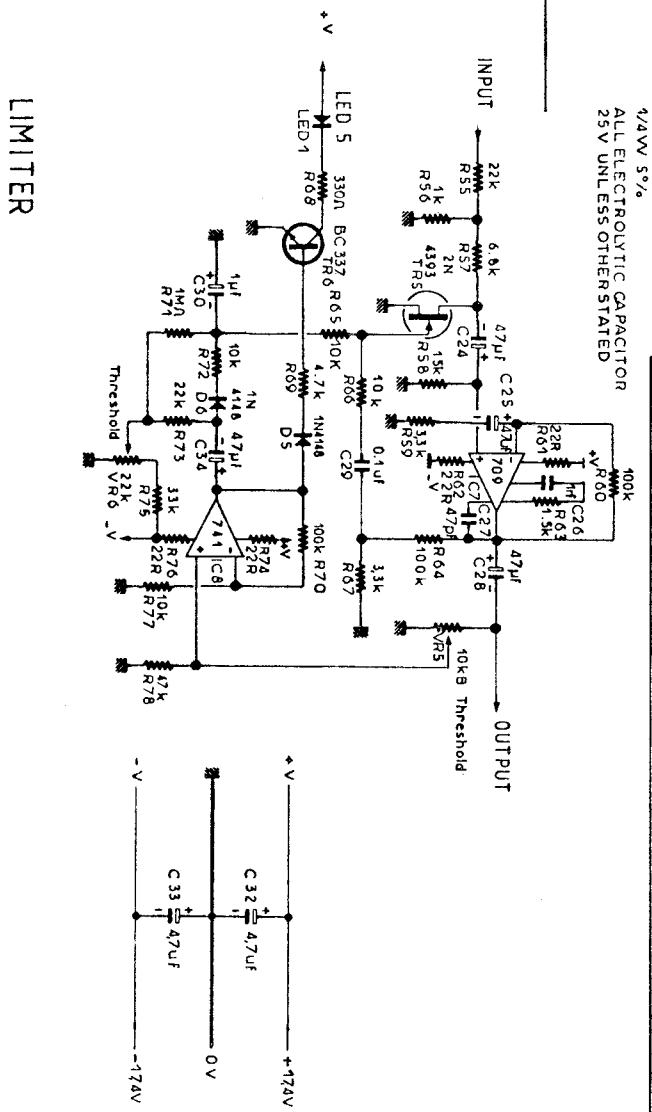
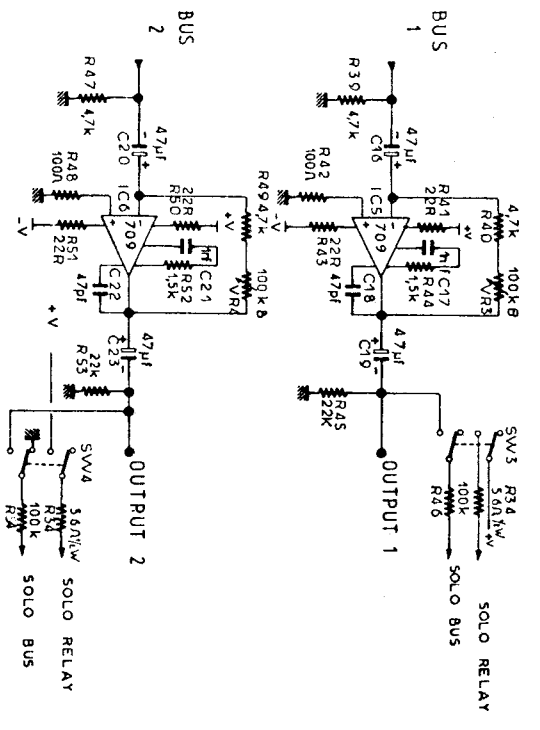




ALL CARBON RESISTOR  
474W 5%  
ALL ELECTROLYTIC CAPACITOR  
25V UNLESS OTHERWISE STATED

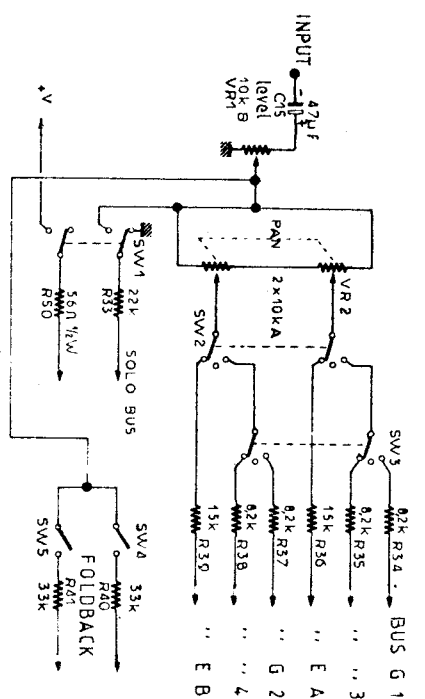


# GROUP FOLDBACK

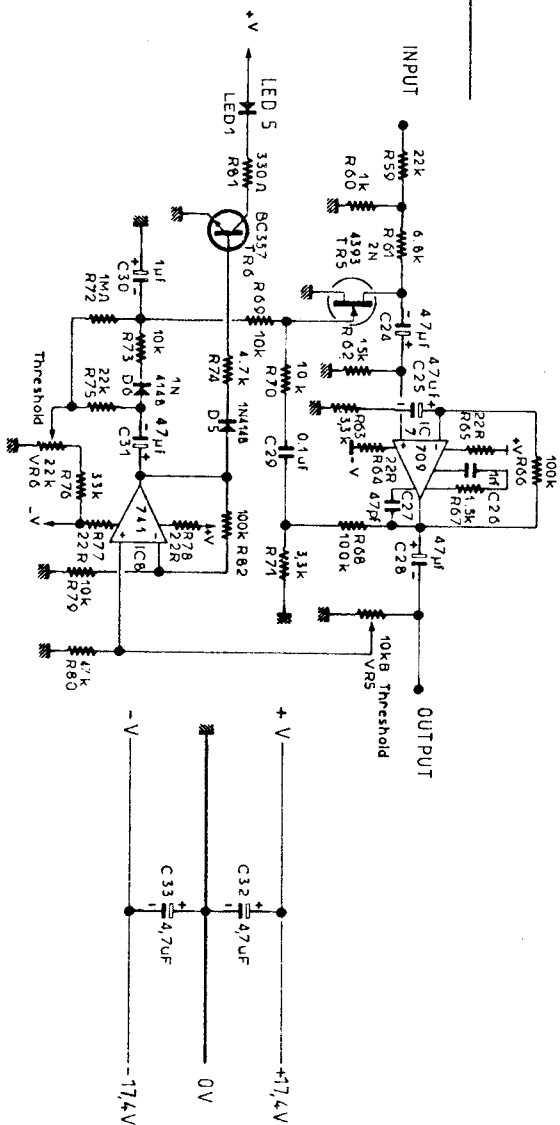


REFERENCES	MAXI	MODIFICATIONS	DESIGNER	DATE
D 13	C 35		DESIGNER	
TR 6	SW 4		DESIGNER	
IC 8	LED 1		DESIGNER	
R 78			DESIGNER	
VR 5			DESIGNER	
GROUP 1/2				
531				





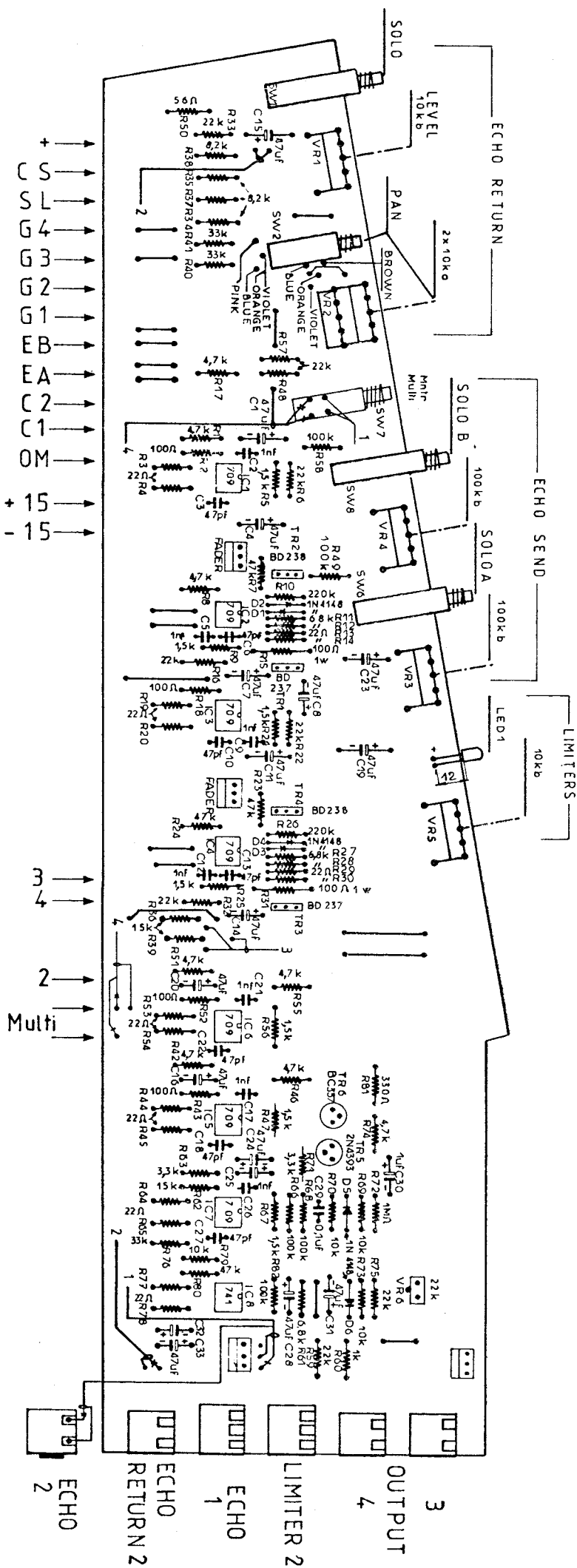
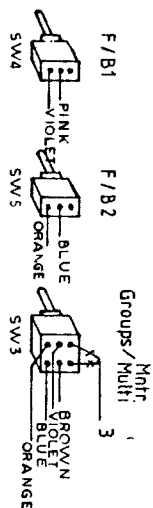
ECHO Return



LIMITEE

*Judson*

GROUP	3-6	5-8
1	1	1
2	2	2
3	3	3
4	4	4
5	5	5
6	6	6
7	7	7
8	8	8
9	9	9
10	10	10
11	11	11
12	12	12
13	13	13
14	14	14
15	15	15
16	16	16
17	17	17
18	18	18
19	19	19
20	20	20
21	21	21
22	22	22
23	23	23
24	24	24
25	25	25
26	26	26
27	27	27
28	28	28
29	29	29
30	30	30
31	31	31
32	32	32
33	33	33
34	34	34
35	35	35
36	36	36
37	37	37
38	38	38
39	39	39
40	40	40
41	41	41
42	42	42
43	43	43
44	44	44
45	45	45
46	46	46
47	47	47
48	48	48
49	49	49
50	50	50
51	51	51
52	52	52
53	53	53
54	54	54
55	55	55
56	56	56
57	57	57
58	58	58
59	59	59
60	60	60
61	61	61
62	62	62
63	63	63
64	64	64
65	65	65
66	66	66
67	67	67
68	68	68
69	69	69
70	70	70
71	71	71
72	72	72
73	73	73
74	74	74
75	75	75
76	76	76
77	77	77
78	78	78
79	79	79
80	80	80
81	81	81
82	82	82
83	83	83
84	84	84
85	85	85
86	86	86
87	87	87
88	88	88
89	89	89
90	90	90
91	91	91
92	92	92
93	93	93
94	94	94
95	95	95
96	96	96
97	97	97
98	98	98
99	99	99
100	100	100



EYE LID CAP:  
SW2: YELLOW  
SW7: ORANGE  
SIMPLE CAP:  
SW1-6: BLACK

→ +  
→ S  
→ L  
→ G  
→ 4  
→ G  
→ 3  
→ G  
→ 2  
→ G  
→ 1  
→ E  
→ B  
→ A  
→ C  
→ 2  
→ C  
→ 1  
→ O  
→ M  
→ + 15  
→ - 15

→ 3  
→ 4  
→ 2  
→ Multi

ECHO  
2

ECHO  
RETURN 2

ECHO  
1

LIMITER 2

OUTPUT  
4

3

MODIFICATIONS

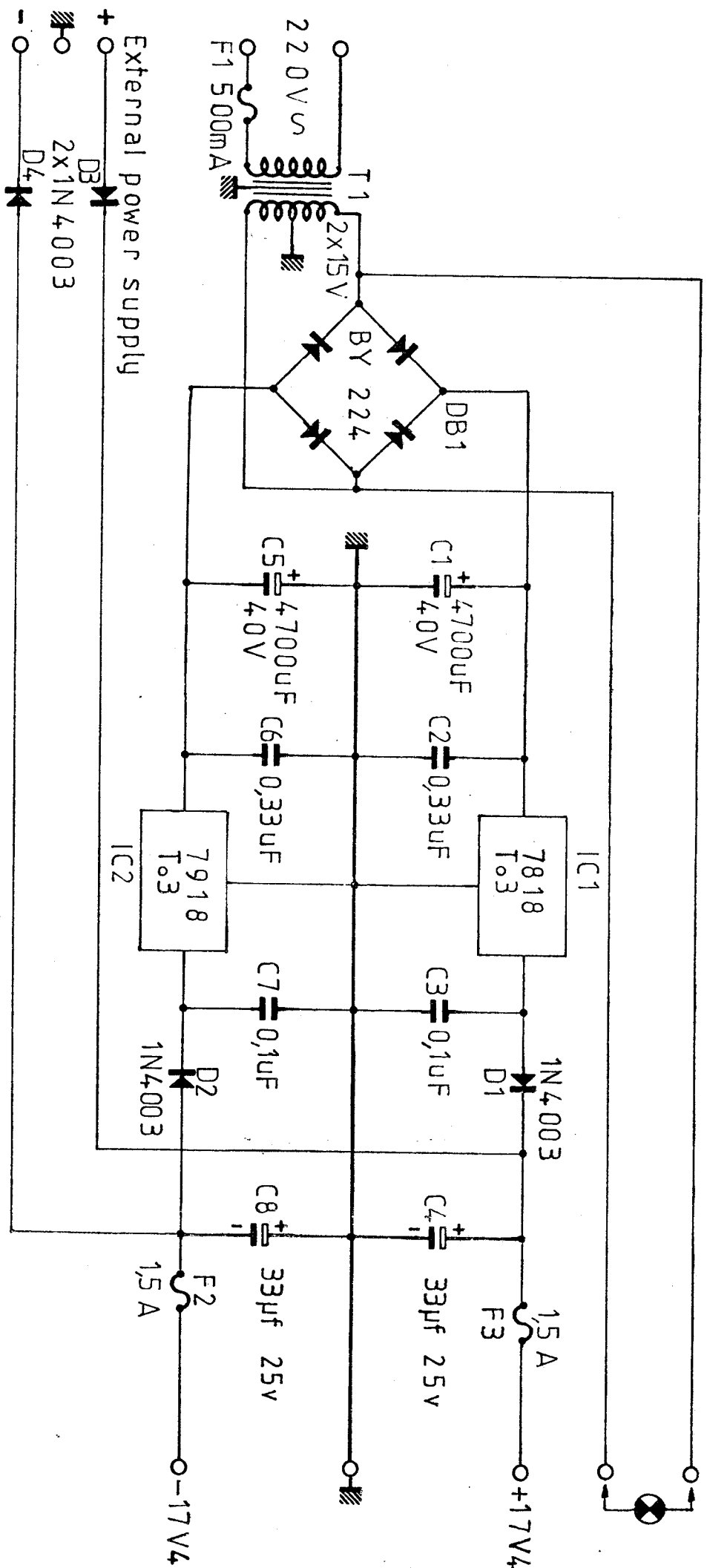
EN. IMPLANTATION

GROUP 3.4

534

*London*





OM Modification

A

B

C

D

E

*Anders*

Ens CSL1604 DO

Dessp: BOITEL

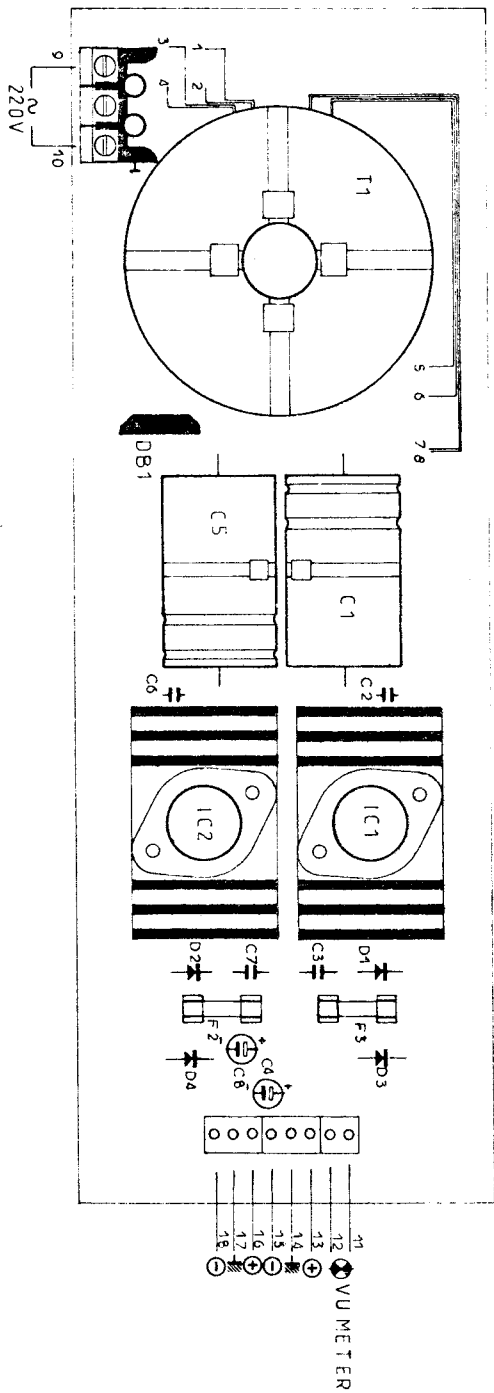
30/11/77

*M*

1/9/78

POWER SUPPLY

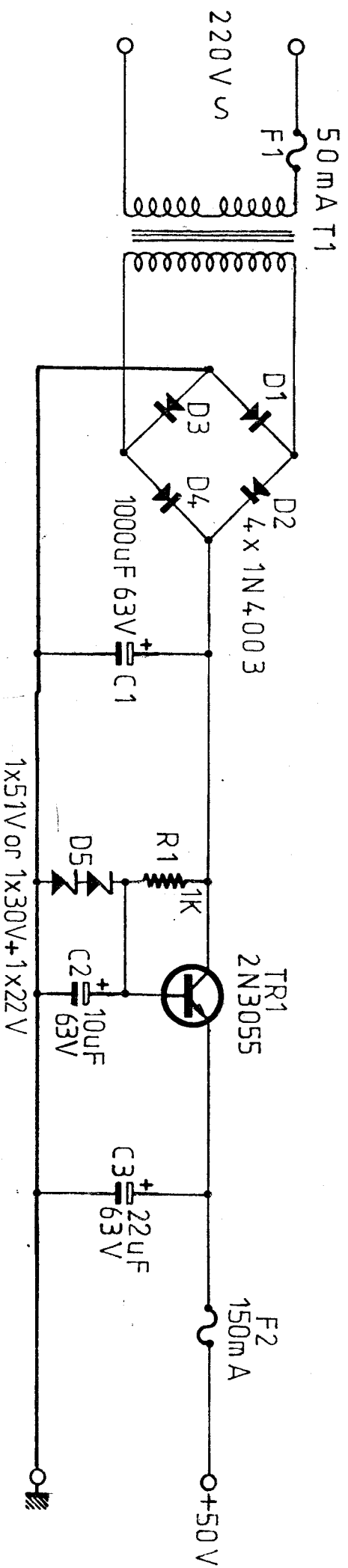
450



16-13-1 Red  
 2 Brown  
 3 Orange  
 18-15-4 Black  
 5 Yellow  
 11-12-6 Violet  
 10-9-7 Blue  
 17-14-8 Green

⊕ 17.4V  
 ⊖

5									
4									
3									
2									
1									
1	IND	MODIFICATION	FORM	Execut. por.	DATE	VIS			
	TOL GEN	STANDARD	STAT	312 X 110	82/11/29	171			
	File gins								
Traficant				Finition		Ensemble			
VERIFIE				VISA		POWER SUPPLY			
LE 300				M		CSL1604.00			
COMPONENT				9.0.0.6.6.4					



OM	Modification		Dess P: BOITEL
A			
B			
C			
D			
E			

PHANTOM POWER SUPPLY 452

EMS: 1604DO

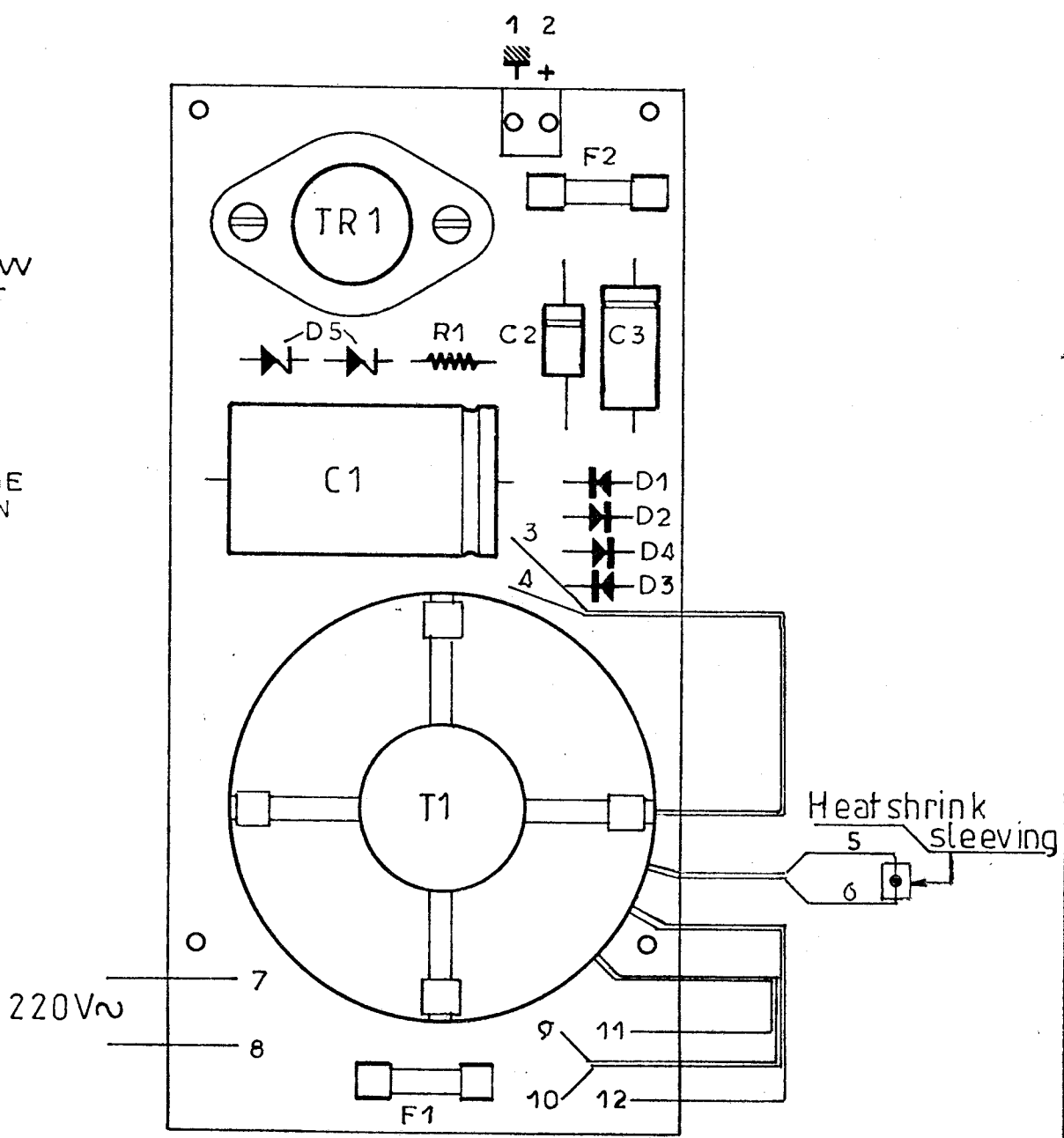
*Handwritten signature*

2011/11/19 J. J. J. J. J.

05/09/79

OF N°  
Quant  
totale  
Quant  
A  
lancer

- 1 GREEN
- 2 BLUE
- 3 YELLOW
- 4 VIOLET
- 5 GREEN
- 6 BLUE
- 7 BLUE
- 8 BLUE
- 9 BLACK
- 10 ORANGE
- 11 BROWN
- 12 RED



TOL. GEN.	NAT. or QUAL	STANDARD	ETAT	FORME	DIMENSIONS 255x76	DÉBIT	ECHELLE 1/1
TRAITEMENT				FINITION DEFLUXED			
Le 20/11/79. <i>[Signature]</i> Executé par BOITEL			Sous ensemble Subassembly <b>PHANTOM POWER SUPPLY</b>		Ensemble Assembly <b>CSL 1604 D0</b>		
Designation Designation <b>COMPONENT LAY OUT</b>			<i>Hudson</i>		<b>9 0 0 6 6 5</b>		

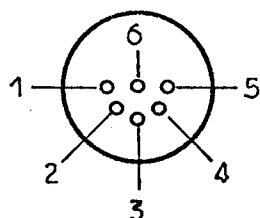
Ind. Demande Modification

Le 10/11/79

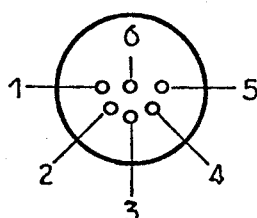
OF N°

Quant  
totaleQuant  
à  
lancer

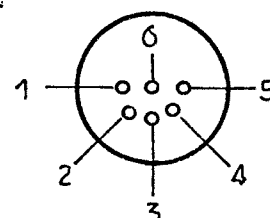
J1



J2



J3



1- Relay solo

2-

3- +15 V

4- -15 V

5- N.C.

6- +Phantom power supply

1- Group 1

2- Group 2

3- Group 3

4- Group 4

5- N.C.

6- N.C.

1- Echo 1

2- Echo 2

3- Foldback 1

4- Foldback 2

5- Solo

6- N.C.

TOL. GEN.	NAT. et QUAL.	STANDARD	ETAT	FORME	DIMENSIONS	DÉBIT	ECHELLE
-----------	---------------	----------	------	-------	------------	-------	---------

TRAITEMENT

FINITION

Sous-ensemble Sub-assembly

Extension

Ensemble Assembly

CSL 1604 DO

Désignation Designation

CIRCUIT DIAGRAM

Hudson

9 0 0 6 5 0

Ind. Demande Modification

Etabli par CAVALLON

Exécuté par BOITEL

Le 06/07/79